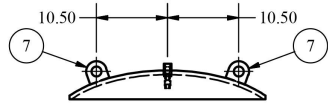


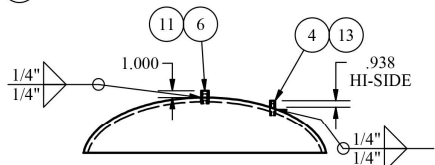
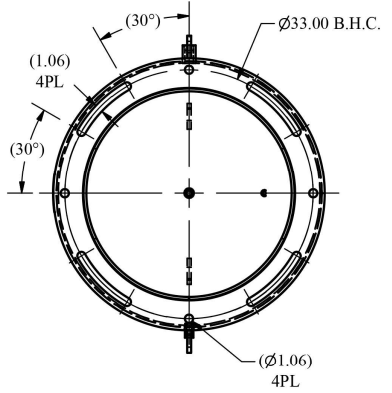
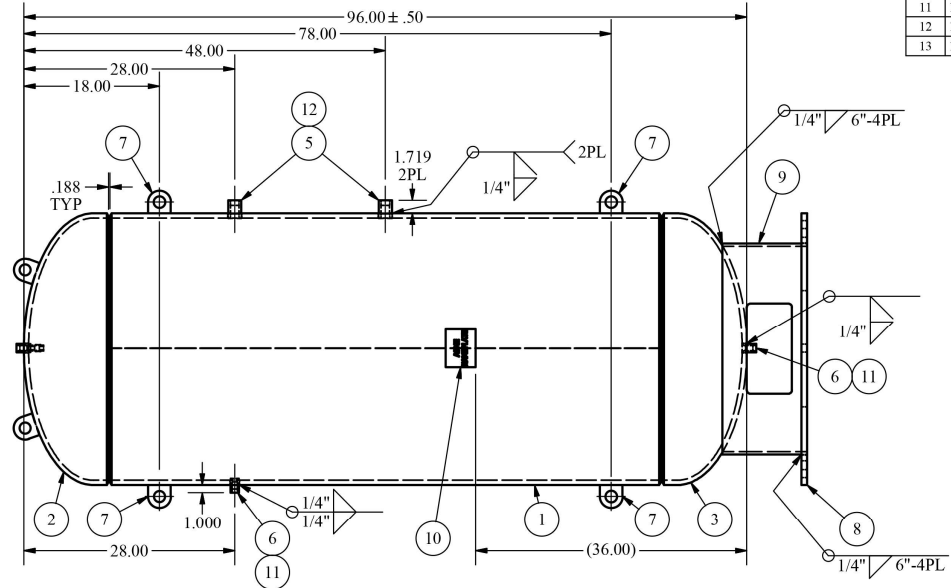
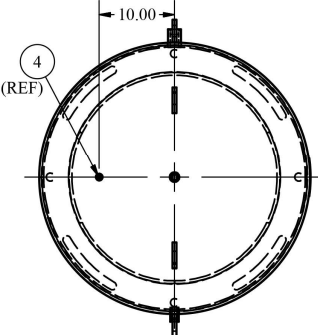
Item	PartNum	Qty	Description	Material	Pkg
1	1036-054	1	36 x .625" NOM SHELL	SA-516 GR 70	
2	2036-050	1	36" ELLIP HEAD	SA-516 GR 70	
3	2036-051	1	36" ELLIP HEAD	SA-516 GR 70	
4	30-005L2	1	1/4" NPT COUPLING	SA-105	
5	30-014	2	1" FULL COUPLING 3000#	SA-105	
6	30-021	3	1/2" NPT COUPLING 3000#	SA-105	
7	40-1163	6	1/2" THICK LIFT LUG	SA-516 GR 70	
8	40-1524	1	36" BASE PLATE	SA-516 GR 70	
9	40-2895	1	28" x 12" STAND RING	SA-36	
10	160-003LS	1	LIBERTY NAMEPLATE	Stainless Steel	
11	150-043	3	PROTECTOR	Vinyl	X
12	150-061	2	PROTECTOR	Vinyl	X
13	150-064	1	PROTECTOR	Vinyl	X



ENGRAVE CUSTOMER PART
NUMBER IN PART/TAG NO. BOX
OF NAMEPLATE



LIFT LUG DETAIL



TOP FITTING
DETAIL

- NOTES:
1. ALL JOINT WELDED.
 2. 500 PSIG MAX. WORKING PRESSURE.
 3. FINISH: RAL-9005 BLACK POWDER PAINT.
 4. HYDROSTATIC TEST PRESSURE - 650 PSIG.
 5. MANUFACTURE VESSEL IN ACCORDANCE W/ ASME SEC. VIII, DIV. 1 (LATEST EDITION) RULES FOR CONSTRUCTION.
 6. MIN. DESIGN METAL TEMP. = -20°F.
 7. MAX. DESIGN TEMP. = 500°F.
 8. "U" STAMPING REQUIRED.
 9. USE WPS MIG-1-PA OR WPS SUB-ARC-1-PA FOR ALL WELDING.
 10. NAMEPLATE TO BE STAMPED w/ RT-4 DESIGNATION.
 11. CORROSION ALLOWANCE: 0".

Tolerances unless otherwise specified
 0.000 = ± .060 Angular = ± 2°
 0.00 = ± .250 unless otherwise specified

Description: **36" x 96" VERT. RECEIVER**

Customer/Material: **LIBERTY #43312**

Weight: **2200#** Capacity: **380 GAL**

Date: **1/6/2021** By: **SB** Part No.: **RV3696B** Approved: _____