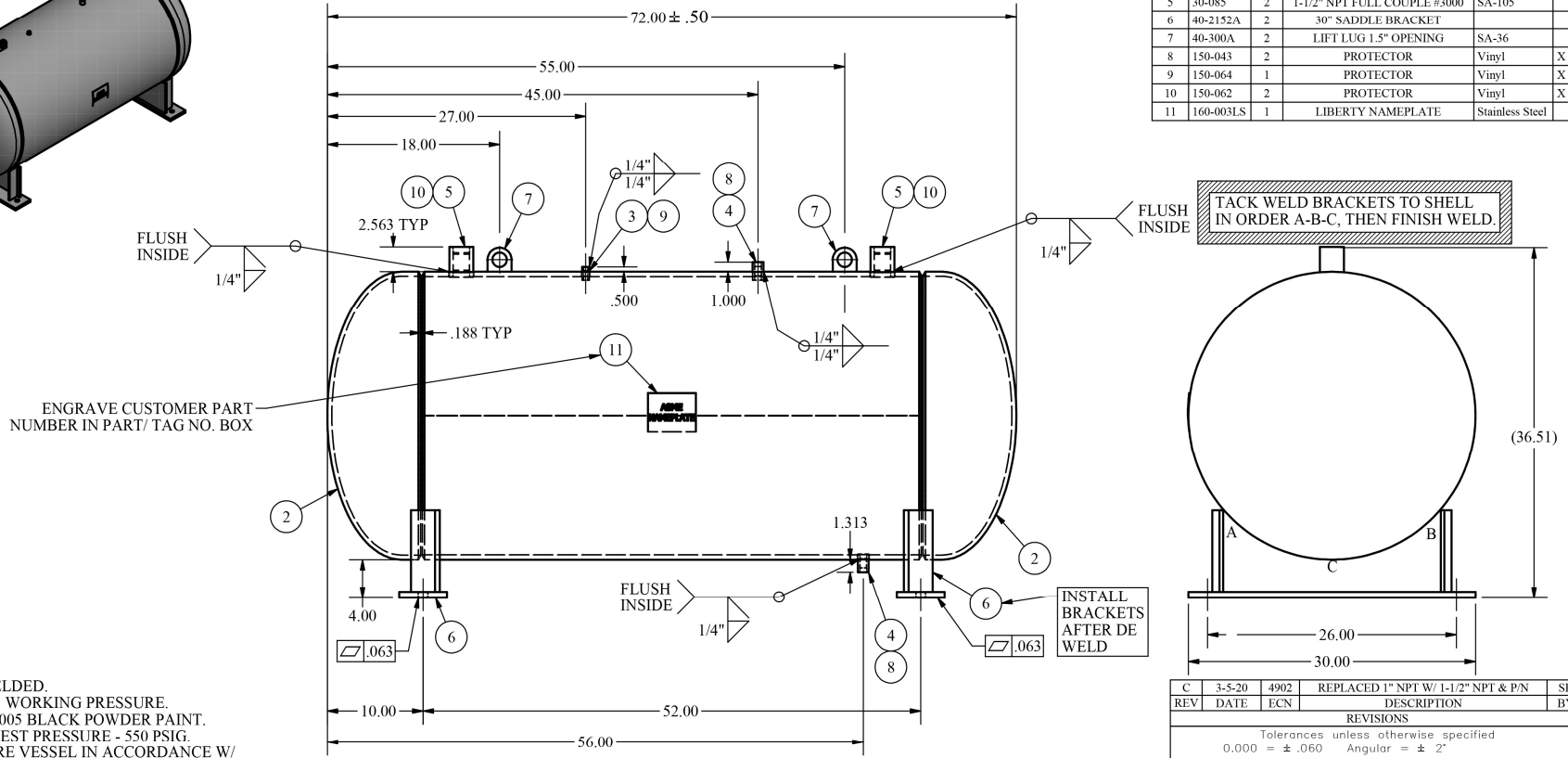


Item	PartNum	Qty	Description	Material	Pkg
1	1030-067	1	30x.500" NOM SHELL	SA-516 GR 70	
2	20-054	2	30" 2:1 ELLIPTICAL HEAD	SA-516 GR 70	
3	30-005	1	1/4" NPT COUPLING 3000#	SA-105	
4	30-021	2	1/2" NPT COUPLING 3000#	SA-105	
5	30-085	2	1-1/2" NPT FULL COUPLE #3000	SA-105	
6	40-2152A	2	30" SADDLE BRACKET		
7	40-300A	2	LIFT LUG 1.5" OPENING	SA-36	
8	150-043	2	PROTECTOR	Vinyl	X
9	150-064	1	PROTECTOR	Vinyl	X
10	150-062	2	PROTECTOR	Vinyl	X
11	160-003LS	1	LIBERTY NAMEPLATE	Stainless Steel	



- NOTES:
1. ALL JOINT WELDED.
 2. 500 PSIG MAX. WORKING PRESSURE.
 3. FINISH: RAL-9005 BLACK POWDER PAINT.
 4. PNEUMATIC TEST PRESSURE - 550 PSIG.
 5. MANUFACTURE VESSEL IN ACCORDANCE W/ ASME SEC. VIII, DIV. 1 (LATEST EDITION) RULES FOR CONSTRUCTION.
 6. MIN. DESIGN METAL TEMP. = -20°F.
 7. MAX. DESIGN TEMP. = 500°F.
 8. "U" STAMPING REQUIRED.
 9. USE WPS MIG-1-PA OR WPS SUB-ARC-1-PA FOR ALL WELDING.
 10. NAMEPLATE TO BE STAMPED w/ RT-4 DESIGNATION.
 11. CORROSION ALLOWANCE: 0".
 12. MINIMUM PRESSURE = 0 PSIG.

REV	DATE	ECN	DESCRIPTION	BY
C	3-5-20	4902	REPLACED 1" NPT W/ 1-1/2" NPT & P/N	SB

REVISIONS

Tolerances unless otherwise specified
 0.000 = ± .060 Angular = ± 2°
 0.00 = ± .250 unless otherwise specified

Description: 30" x 72" HORZ. RECEIVER

Customer/Material: LIBERTY #43107

Weight: 1220# Capacity: 188 GAL

Date: 10/23/2019 By: JZ Part No: RH3072A Approved:

