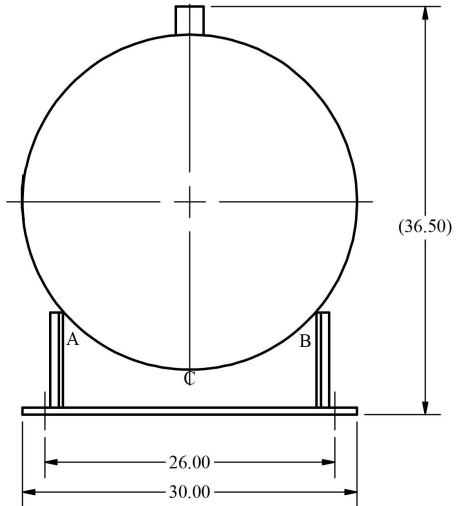


Item	PartNum	Qty	Description	Material	Pkg
1	1030-109	1	30.00 x .625" NOM SHELL	SA-516 GR 70	
2	20-196HT	2	30" 2:1 ELLIPTICAL HEAD	SA-516 GR 70	
3	30-005	1	1/4" NPT COUPLING 3000#	SA-105	
4	30-021	2	1/2" NPT COUPLING 3000#	SA-105	
5	30-085	2	1-1/2" NPT FULL COUPLE #3000	SA-105	
6	40-300A	2	LIFT LUG 1.5" OPENING	SA-36	
7	40-2152A	2	30" SADDLE BRACKET	Steel	
8	160-003LS	1	LIBERTY NAMEPLATE	Stainless Steel	
9	150-043	2	PROTECTOR	Vinyl	X
10	150-062	2	PROTECTOR	Vinyl	X
11	150-064	1	PROTECTOR	Vinyl	X

TACK WELD BRACKETS TO SHELL
IN ORDER A-B-C, THEN FINISH WELD.



- NOTES:
1. ALL JOINT WELDED.
 2. 600 PSIG MAX. WORKING PRESSURE.
 3. FINISH: RAL-9005 BLACK POWDER PAINT.
 4. PNEUMATIC TEST PRESSURE = 660 PSIG.
 5. MANUFACTURE VESSEL IN ACCORDANCE W/ ASME SEC. VIII, DIV. 1 (LATEST EDITION) RULES FOR CONSTRUCTION.
 6. MIN. DESIGN METAL TEMP. = -20°F.
 7. MAX. DESIGN TEMP. = 500°F.
 8. "U" STAMPING REQUIRED.
 9. USE WPS MIG-1-PA OR WPS SUB-ARC-1-PA FOR ALL WELDING.
 10. NAMEPLATE TO BE STAMPED w/ RT-4 DESIGNATION.
 11. CORROSION ALLOWANCE: 0".
 12. MINIMUM PRESSURE = 0 PSIG.

Tolerances unless otherwise specified			
0.000 = ± .060		Angular = ± 2°	
0.00 = ± .250		⊥ unless otherwise specified	
Description 30" x 78" HORIZ. RECEIVER			
Customer/Material LIBERTY PN# 43324			
Weight 1415#	Capacity 200 GAL		
Date 7/26/2021		By TA	Part No. RHH3078B
			Approved