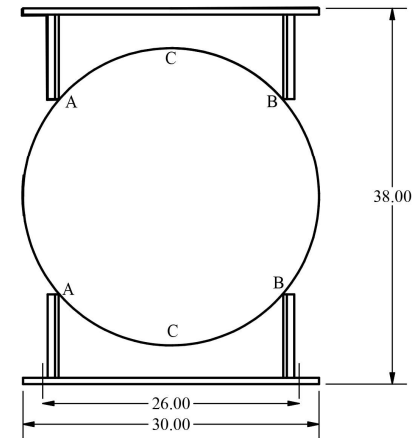


| Item | PartNum | Qty | Description | Material | Pkg |
|------|-----------|-----|------------------------------|-----------------|-----|
| 1 | 1030-068 | 1 | 30x.250" NOM SHELL | SA-516 GR 70 | |
| 2 | 20-209 | 2 | 30" x .235 MIN JOGGLED HEAD | SA-414 GR G | |
| 3 | 30-031 | 2 | 1-1/2" NPT HALF COUPLE 3000# | SA-105 | |
| 4 | 30-021 | 2 | 1/2" NPT COUPLING 3000# | SA-105 | |
| 5 | 30-005 | 1 | 1/4" NPT COUPLING 3000# | SA-105 | |
| 6 | 40-2152A | 4 | 30" SADDLE BRACKET | Steel | |
| 7 | 40-300A | 2 | LIFT LUG 1.5" OPENING | SA-36 | |
| 8 | 160-003LS | 1 | LIBERTY NAMEPLATE | Stainless Steel | |
| 9 | 150-043 | 2 | PROTECTOR | Vinyl | X |
| 10 | 150-064 | 1 | PROTECTOR | Vinyl | X |
| 11 | 150-062 | 2 | PROTECTOR | Vinyl | X |

TACK WELD BRACKETS TO SHELL
IN ORDER A-B-C, THEN FINISH WELD.



ENGRAVE CUSTOMER PART
NUMBER IN PART/TAG NO. BOX

- NOTES:
1. ALL JOINT WELDED.
 2. 225 PSIG MAX. WORKING PRESSURE.
 3. FINISH: RAL-9005 BLACK POWDER PAINT.
 4. PNEUMATIC TEST PRESSURE - 248 PSIG.
 5. MANUFACTURE VESSEL IN ACCORDANCE W/ ASME SEC. VIII, DIV. 1 (LATEST EDITION) RULES FOR CONSTRUCTION.
 6. MIN. DESIGN METAL TEMP. = -20°F.
 7. MAX. DESIGN TEMP. = 500°F.
 8. "U" STAMPING REQUIRED.
 9. USE WPS MIG-1-PA OR WPS SUB-ARC-1-PA FOR ALL WELDING.
 10. CORROSION ALLOWANCE: 0".

| Tolerances unless otherwise specified | |
|---------------------------------------|----------------------------|
| 0.000 = ± .060 | Angular = ± 2° |
| 0.00 = ± .250 | unless otherwise specified |
| Description: 30" x 72" HORZ. RECEIVER | |
| Customer/Material: LIBERTY #43200 | |
| Weight: 715# | Capacity: 193 GAL |
| Date: 11/5/2019 | By: SB |
| Part No: RH3072C | Approved: |

| REV | DATE | ECN | DESCRIPTION | BY |
|-----------|---------|------|--------------------------|----|
| E | 6-5-20 | 5042 | INCREASED MAWP | SB |
| D | 4-28-20 | 4992 | ADDED MISSING DIMENSIONS | SB |
| REVISIONS | | | | |

