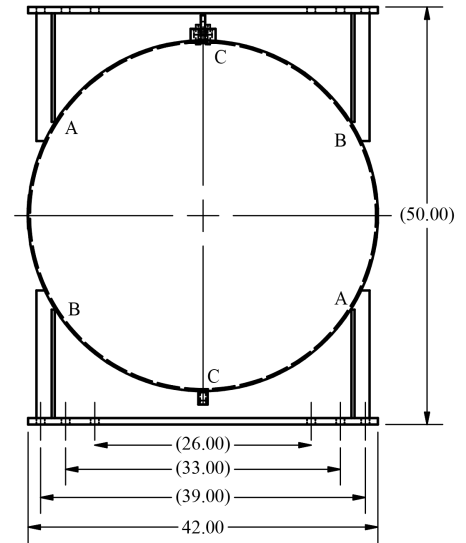


Item	PartNum	Qty	Description	Material	Pkg
1	1042-007	1	42" x .250 NOM SHELL	SA-516 GR 70	
2	20-206	2	42" x .265 NOM 2:1 ELLIP. HEAD	SA-414 GR G	
3	40-1163	2	1/2" THICK LIFT LUG	SA-516 GR 70	
4	40-2644	4	42" SADDLE BRACKET	SA-36	
5	30-038	2	2" NPT HALF COUPLE 3000#	SA-105	
6	30-014	1	1" FULL COUPLING 3000#	SA-105	
7	30-005	1	1/4" NPT COUPLING 3000#	SA-105	
8	30-021	1	1/2" NPT COUPLING 3000#	SA-105	
9	160-003LS	1	LIBERTY NAMEPLATE	Stainless Steel	
10	150-063	2	PROTECTOR	Vinyl	X
11	150-064	1	PROTECTOR	Vinyl	X
12	150-061	2	PROTECTOR	Vinyl	X
13	150-043	1	PROTECTOR	Vinyl	X

TACK WELD BRACKETS TO SHELL  
IN ORDER A-B-C, THEN FINISH WELD



- Notes
1. ALL JOINTS WELDED.
  2. 155 PSIG MAX. WORKING PRESSURE.
  3. FINISH: RAL-9005 BLACK POWDER PAINT
  4. HYDROSTATIC TEST PRESSURE - 205 PSIG
  5. MANUFACTURE VESSEL IN ACCORDANCE WITH ASME SEC. VIII DIV. 1 (LATEST EDITION) RULES FOR CONSTRUCTION
  6. MIN. DESIGN METAL TEMP. (MDMT) = -20°F
  7. MAX. DESIGN METAL TEMP. = 500°F
  8. "U" STAMPING REQUIRED
  9. USE WPS MIG-1-PA OR WPS SUB-ARC-1-PA FOR ALL WELDING
  10. CORROSION ALLOWANCE: 0"
  11. MINIMUM PRESSURE: 0 PSIG

ENGRAVE CUSTOMER PART NUMBER IN PART/TAG NO. BOX

Tolerances unless otherwise specified  
 0.000 = ± .060 Angular = ± 2°  
 0.00 = ± .250  $\sqrt{\text{V}}$  unless otherwise specified

Description  
**42" x 117" HORIZONTAL RECEIVER**

Customer/Material  
**LIBERTY #43204**

Weight 1575# Capacity 660 GAL

Date 1/30/2020 By SB Part No. RH42117A Approved

REV	DATE	ECN	DESCRIPTION	BY
A	3-5-20	4902	UPDATED CUSTOMER P/N	SB
REVISIONS				